



2HB 610

Selection and ordering data

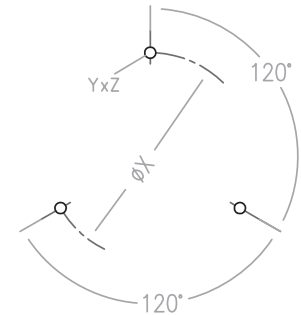
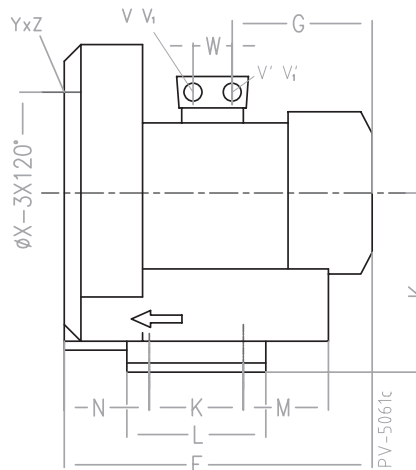
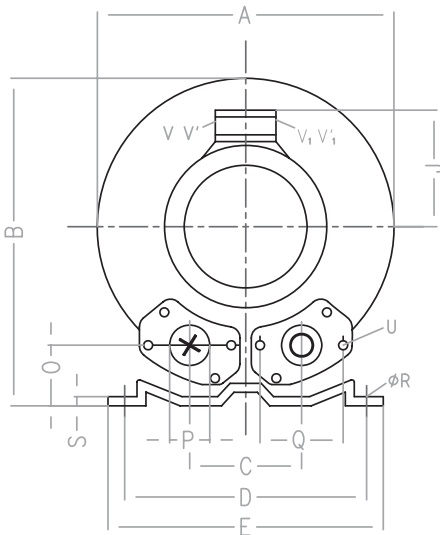
Type 2HB 610

Curve No.	Order No.	Fre- quency	Rated power	Input voltage		Input current		Permissible total differential pressure ²⁾		Sound pressure level ³⁾	Weight ca.
				V		A		Vacuum mbar	Compressor mbar		

3~ 50/60 Hz IP55 insulation material class F)

A 270	2HB 610-160T	50	1.6	200D ... 240D	345Y...415Y	8.5D	4.9Y	-170	180	68	25
A 271	2HB 610-160T	60	2.05	220D ... 275D	380Y...480Y	8.8D	5.1Y	-180	190	70	25
A 272	2HB 610-220T	50	2.2	200D ... 240D	345Y...415Y	9.7D	5.6Y	-235	220	69	28
A 273	2HB 610-220T	60	2.55	220D ... 275D	380Y...480Y	10.3D	6.0Y	-245	230	72	28
A 274	2HB 610-300T	50	3.0	200D ... 240D	345Y...415Y	12.5D	7.2Y	-280	280	69	34
A 275	2HB 610-300T	60	3.45	220D ... 275D	380Y...480Y	12.6D	7.3Y	-260	270	72	34

Typ	A	B	C	D	E	F	G	H	J	K	L	M	N	O	ØP	Q	ØR	S	U	V	V'	ØX	YxZ
2HB 610-160T	360	366	122	284	325	354	191	192	128	140	180	64	74	56	56	93	13	4,5	M8x17	M16x1,5	M25x1,5	226	M8x20
2HB 610-220T	360	366	122	284	325	354	191	192	128	140	180	64	74	56	56	93	13	4,5	M8x17	M16x1,5	M25x1,5	226	M8x20
2HB 610-300T	360	366	122	284	325	385	188	192	135	140	180	64	74	56	56	93	13	4,5	M8x17	M32x1,5	M32x1,5	226	M8x20
2HB 613-160T	360	366	122	284	325	372	191	192	128	140	180	64	74	56	56	93	13	4,5	M8x17	M16x1,5	M25x1,5	226	M8x20
2HB 613-220T	360	366	122	284	325	372	191	192	128	140	180	64	74	56	56	93	13	4,5	M8x17	M16x1,5	M25x1,5	226	M8x20
2HB 613-300T	360	366	122	284	325	403	188	192	135	140	180	64	74	56	56	93	13	4,5	M8x17	M32x1,5	M32x1,5	226	M8x20



All 2HB achieve the standards and norms of the low voltage directive (LVD)2006/95/EC, rotating electrotechnical motor EN 60034-1-2004, electromagnetic compatibility(EMC)EN55014-1/2,EN61000-2/-3/-4/-6.

- 1) For standard UL for ELECTRIC MOTOR UL 1004-1.
- 2) Relief-valve are available for limiting differential pressure.
- 3) Measuring-surface sound-pressure level acc. to DIN EN 21680, measured at a distance of 1 m. The pump is throttled to an average suction pressure, a hose is connected to the discharge side (compressor) / suction side (vacuum pump), but is not fitted with relief valves.

The motors are designed according to the DIN EN 60 034 / DIN IEC 34-1 and temperature class F.

For the three phase machines the tolerances are +/- 10 % for fixed voltage and +/- 5 % for voltage range.

The single phase machines are designed with a +/- 5 % tolerances. If only 90 % of the maximum allowed pressure will be used for the continuous operating then the allowed voltage range add to +/- 10 %.

For all single and three phase machines which designed according to the UL and CSA norm (UL 1004-1) the maximum allowed voltage tolerances are - 10 % resp. + 6 %.

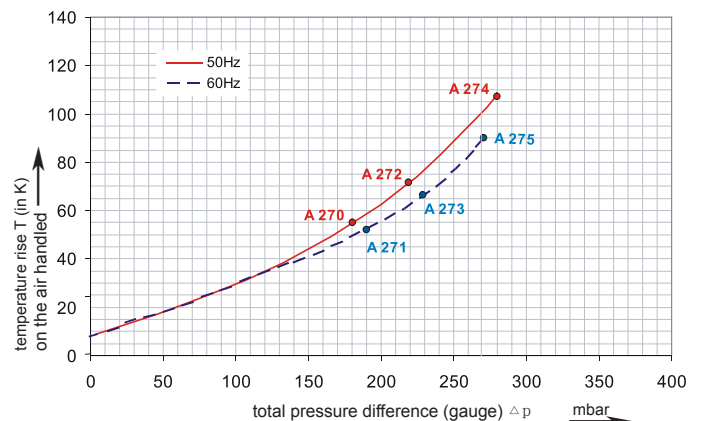
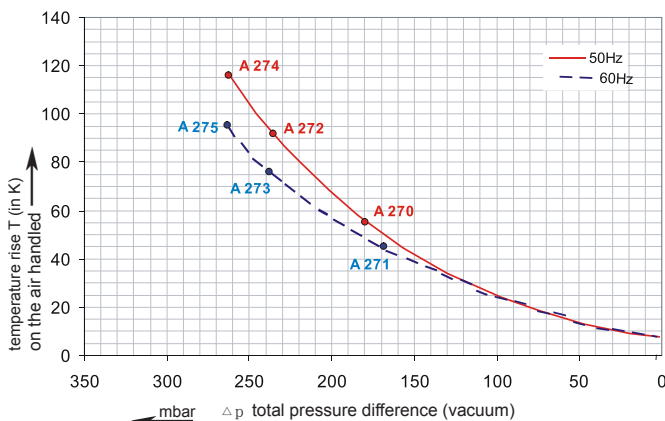
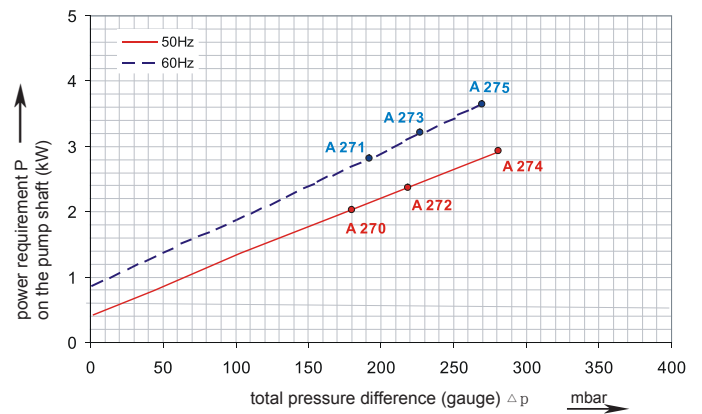
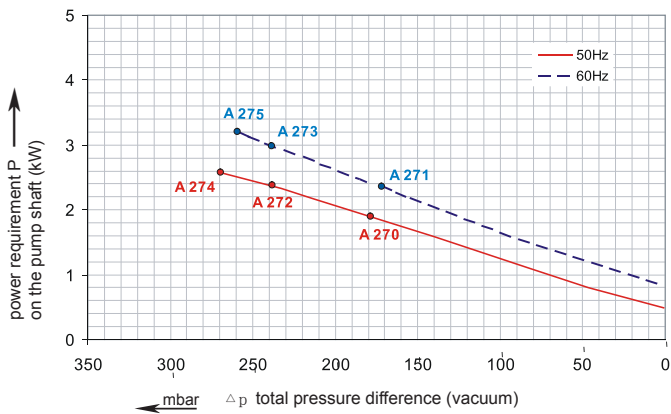
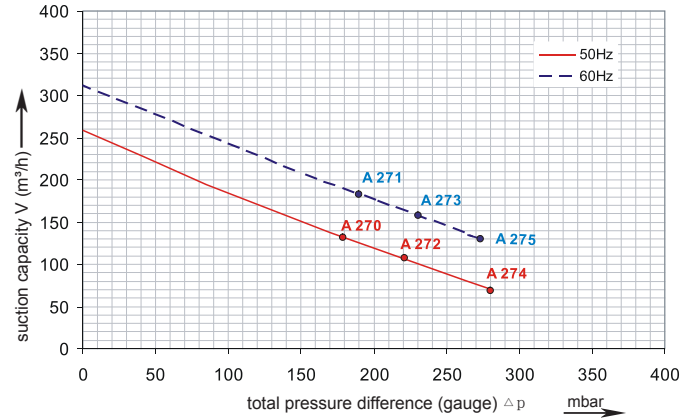
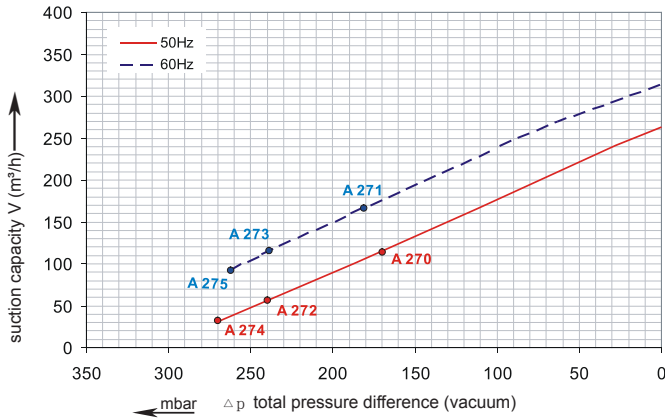
The frequency tolerance is maximum +/- 2 %.



2HB 610

Performance curve for Vacuum pump

Performance curve for Compressor



The performance curves are based on air at a temperature of 15 °C and an atmospheric pressure of 1013 mbar with a tolerance of +/- 10 %. The total pressure differences are valid for suction and ambient temperatures up to 25 °C. For other conditions please confer with us.

Each 2HB type can be applied both as vacuum pump and compressor in continuous operation over the total stated performance curve range. The motors are available as standard for the input voltage range of 50 and 60 Hz and for protection category IP 55 as well as approved for UL and CSA.