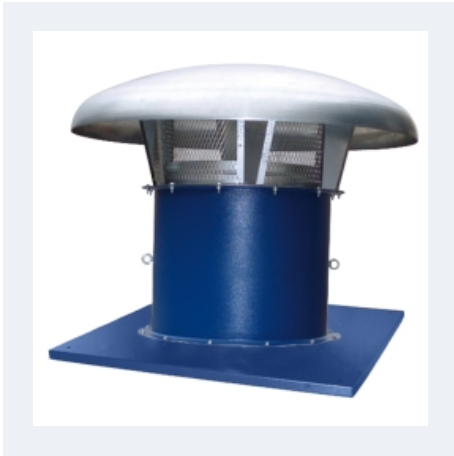


KIT TM + HM



AXIAL WITH METALIC COWL

MANUFACTURING FEATURES:

- Roof cowl made of galvanizez steel.
- Roof base support and bird protection guard with polyester powder coat finishing.
- Assembled on HM fans.(tubular)
- Variable pitch angle Polypropylene impeller (A2 profile) or polyamide impeller reinforced with fibreglass (other profiles).
- Squirrel cage asynchronous standard motor, IP-55 protection and rated class F insulation. Standard voltages 230V 50Hz for single phase motors, 230/400V 50Hz and for three phase motors up to 4kW and 400/690V 50Hz for higher powers.

APPLICATIONS:

Specially designed for roof installation, they are suitable for:

- Air renewal in buildings and industries.
- Smoke extraction.
- Maximum working temperature: 1ph 50°C, 3ph 60°C.

AVAILABLE ON REQUEST

- B form impeller (air flow from impeller to motor)
- Reversible impeller 100%
- Cast aluminium impellers.
- 60Hz fans and special voltages.
- 2 speed motors.
- Hot dip galvanised and stainless steel housings.
- Reinforced fibreglass sheet cowl.

Technical data

Single-phase motor / 4 poles

Code	Model	R.P.M.	Rated I. A 230V	Rated power kW	Max. Airflow m ³ /h	Sound db (A)**	Weight kg	Connect. diagram
KTM35+26136130 635P	KIT TM + HM 35 M4 0,12kW	1380	1,15	0,12	2.320	41	16	1
KTM40+26141230 635P	KIT TM + HM 40 M4 0,25kW	1400	1,93	0,25	3.290	44	20	1
KTM45+26146430 640P	KIT TM + HM 45 M4 0,55kW	1400	3,98	0,55	4.950	47	28	1

Single-phase motor / 6 poles

Code	Model	R.P.M.	Rated I. A 230V	Rated power kW	Max. Airflow m ³ /h	Sound db (A)**	Weight kg	Connect. diagram
KTM63+26165432 635P	KIT TM + HM 63 M6 0,55kW	890	3,9	0,55	8.390	47	53	1

Three-phase motor / 4 poles

Code	Model	R.P.M.	Rated I. A		Rated power kW	Max. Airflow m ³ /h	Sound db (A)**	Weight kg	Connect. diagram
			230V	400V					
KTM35+2613616 0635P	KIT TM + HM 35 T4 0,12kW	1400	0,8	0,46	0,12	2.320	41	16	2
KTM40+2614126 0635P	KIT TM + HM 40 T4 0,25kW	1400	1,38	0,79	0,25	3.290	44	20	2
KTM45+2614646 0640P	KIT TM + HM 45 T4 0,55kW	1440	2,57	1,49	0,55	4.950	47	28	2
KTM56+2615736 2633P	KIT TM + HM 56 T4 0,75kW	1410	2,83	1,63	0,75	8.440	54	36	2
KTM63+2616456 2635P	KIT TM + HM 63 T4 1,5kW	1450	5,67	3,26	1,50	12.940	56	53	2
KTM71+2617246 2635P	KIT TM + HM 71 T4 2,2kW	1435	8,07	4,64	2,20	18.030	59	61	2
KTM80+2618146 2635P	KIT TM + HM 80 T4 3kW	1420	10,7	6,17	3,00	24.170	63	100	2
KTM90+2619126 6328P	KIT TM + HM 90 T4 4kW	1440	14,5	8,32	4,00	30.230	66	115	2

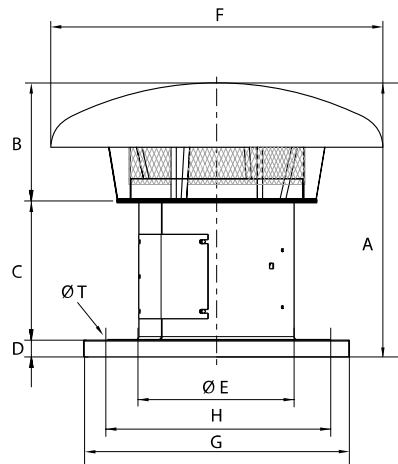
Three-phase motor / 6 poles

Code	Model	R.P.M.	Rated I. A		Rated power kW	Max. Airflow m ³ /h	Sound db (A)**	Weight kg	Connect. diagram
			230V	400V					
KTM63+2616546 2635P	KIT TM + HM 63 T6 0,55kW	900	3,00	1,8	0,55	8.390	47	53	2
KTM71+2617346 2640P	KIT TM + HM 71 T6 0,75kW	925	3,39	1,95	0,75	12.630	51	61	2
KTM80+2618246 2640P	KIT TM + HM 80 T6 1,1kW	925	4,83	2,78	1,10	17.120	52	100	2
KTM90+2619236 6332P	KIT TM + HM 90 T6 1,5kW	940	6,45	3,71	1,50	21.130	58	115	2

Notes:

** Total sound pressure level at the point of maximum flow measured in dB(A) in the suction measured in free field at a distance of 6m from the source

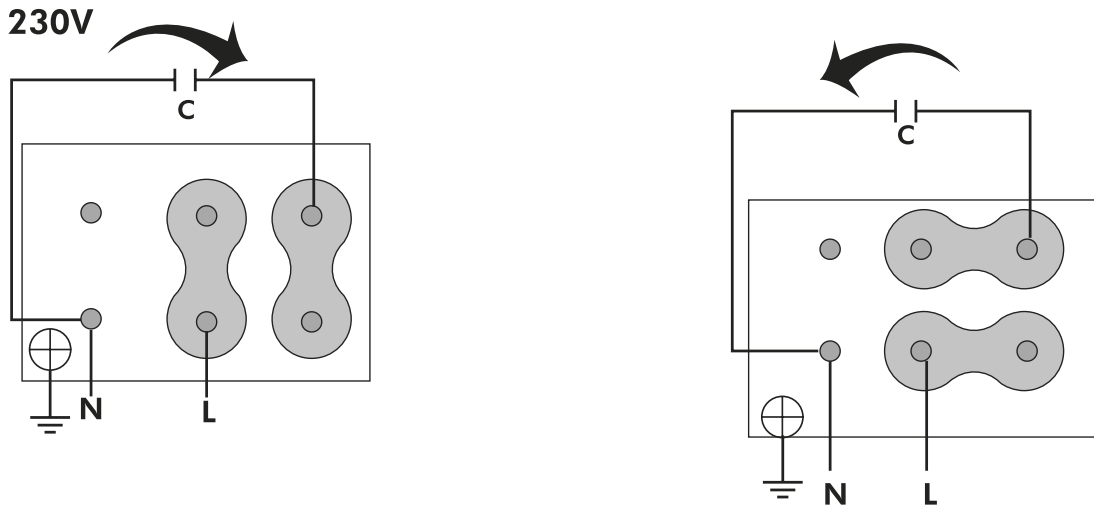
Dimensions



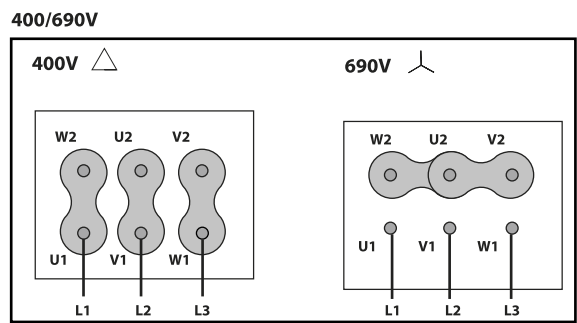
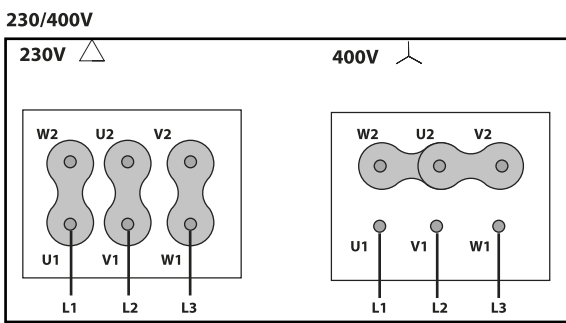
Model	A	B	C	D	E	F	G	H	T
KIT TM + HM 35 M4 0,12kW	735	300	395	40	365	619	630	535	12
KIT TM + HM 35 T4 0,12kW	735	300	395	40	365	619	630	535	12
KIT TM + HM 40 M4 0,25kW	805	325	440	40	403	790	630	535	12
KIT TM + HM 40 T4 0,25kW	805	325	440	40	403	790	630	535	12
KIT TM + HM 45 M4 0,55kW	820	325	455	40	452	790	710	590	14
KIT TM + HM 45 T4 0,55kW	820	325	455	40	452	790	710	590	14
KIT TM + HM 56 T4 0,75kW	998	388	560	50	559	1100	905	750	14
KIT TM + HM 63 M6 0,55kW	988	388	550	50	633	1100	905	750	14
KIT TM + HM 63 T4 1,5kW	988	388	550	50	633	1100	905	750	14
KIT TM + HM 63 T6 0,55kW	988	388	550	50	633	1100	905	750	14
KIT TM + HM 71 T4 2,2kW	1038	388	600	50	715	1100	1100	840	14
KIT TM + HM 71 T6 0,75kW	1038	388	600	50	715	1100	1100	840	14
KIT TM + HM 80 T4 3kW	1040	390	600	50	801	1250	1100	840	14
KIT TM + HM 80 T6 1,1kW	1040	390	600	50	801	1250	1100	840	14
KIT TM + HM 90 T4 4kW	1297	427	820	50	903.5	1500	1250	840	14
KIT TM + HM 90 T6 1,5kW	1297	427	820	50	903.5	1500	1250	840	14

Wiring diagram

Wiring diagram N° 1



Wiring diagram N° 2



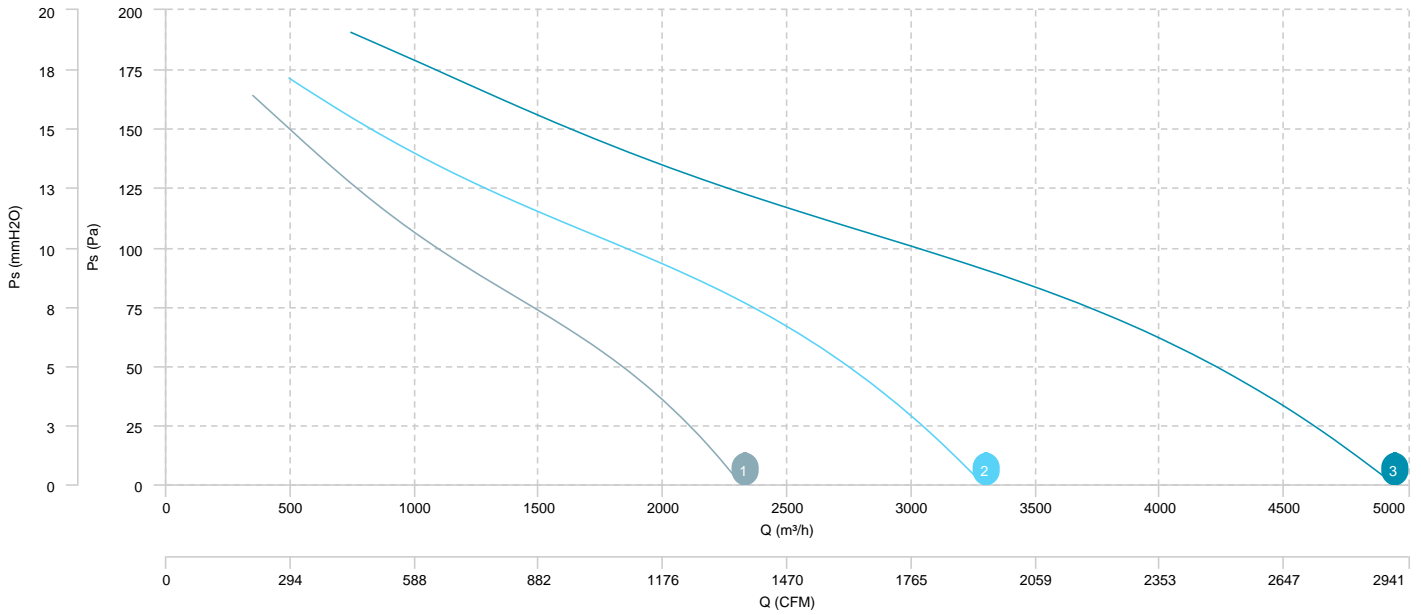
CHARACTERISTIC CURVE

1 KIT TM + HM 35 M4 0,
12kW

2 KIT TM + HM 40 M4 0,
25kW

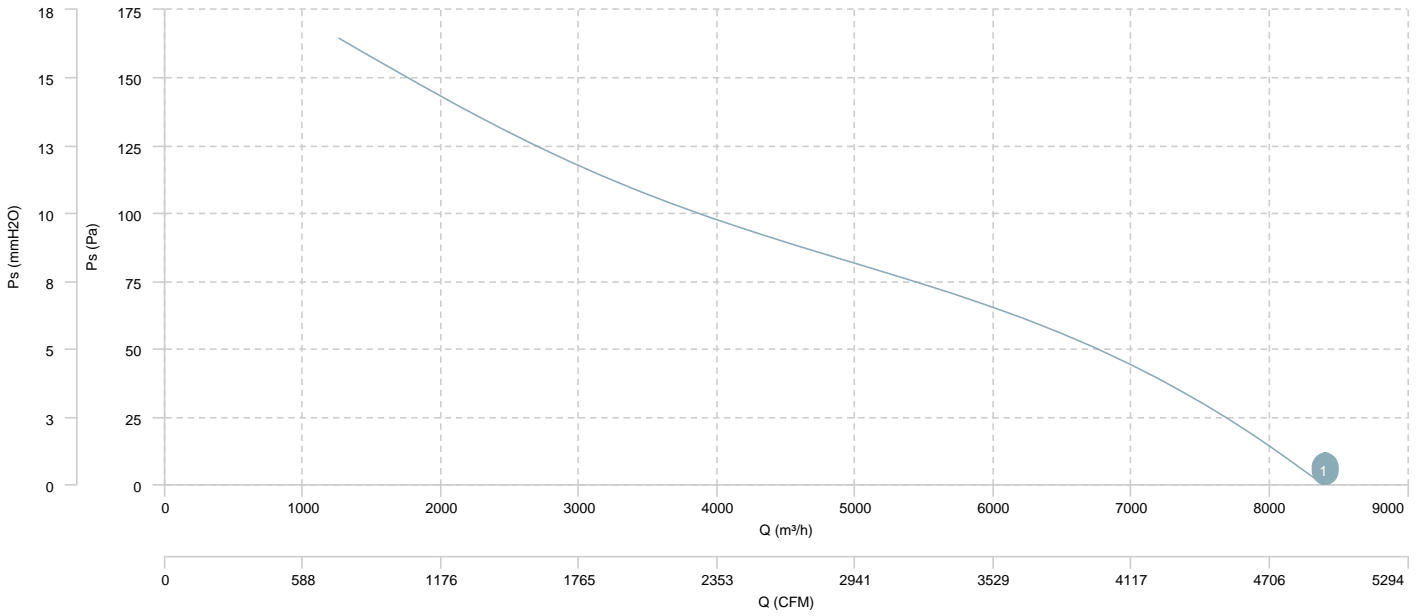
3 KIT TM + HM 45 M4 0,
55kW

AIR FLOW - PRESSURE



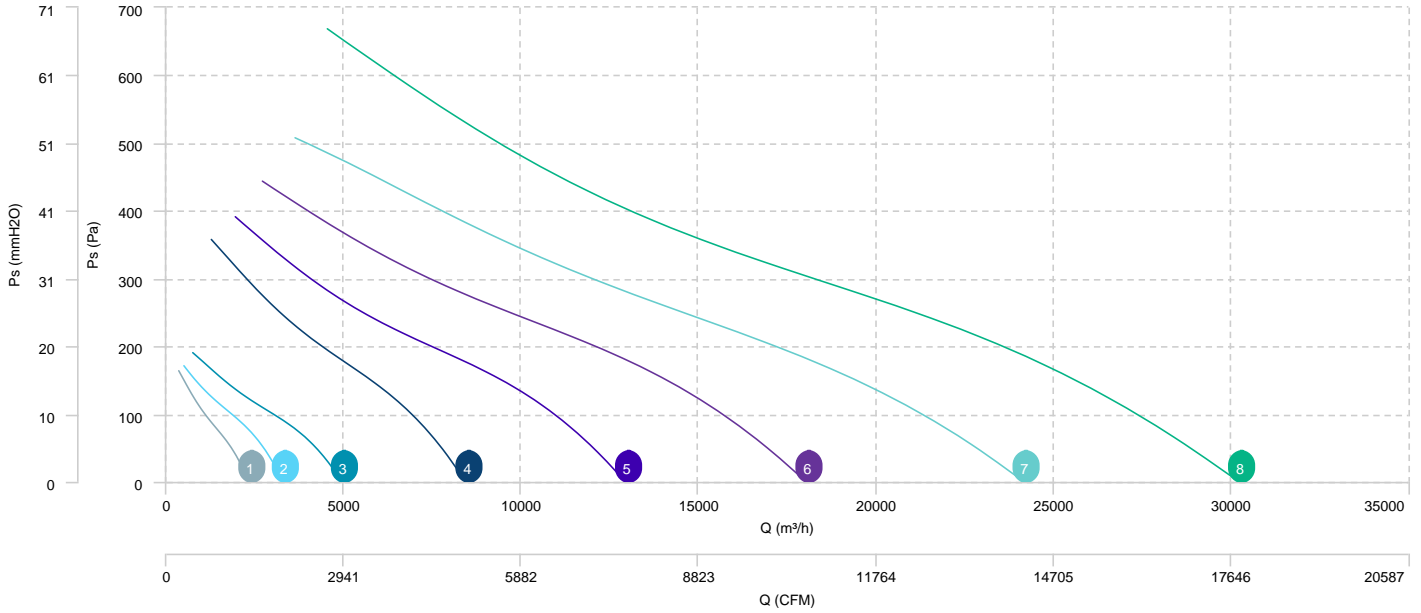
1 KIT TM + HM 63 M6 0,
55kW

AIR FLOW - PRESSURE



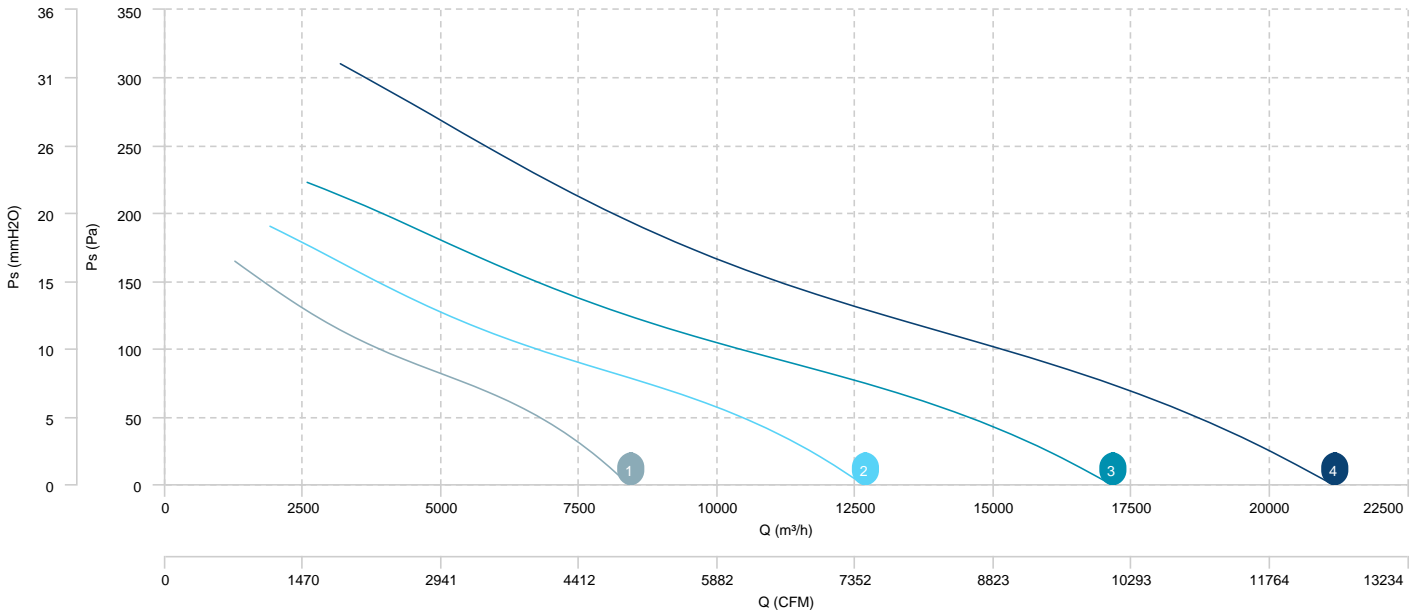
1	KIT TM + HM 35 T4 0, 12kW	2	KIT TM + HM 40 T4 0, 25kW	3	KIT TM + HM 45 T4 0, 55kW	4	KIT TM + HM 56 T4 0, 75kW
5	KIT TM + HM 63 T4 1,5kW	6	KIT TM + HM 71 T4 2,2kW	7	KIT TM + HM 80 T4 3kW	8	KIT TM + HM 90 T4 4kW

AIR FLOW - PRESSURE



- 1 KIT TM + HM 63 T6 0, 55kW
- 2 KIT TM + HM 71 T6 0, 75kW
- 3 KIT TM + HM 80 T6 1,1kW
- 4 KIT TM + HM 90 T6 1,5kW

AIR FLOW - PRESSURE



Sound data

Sound / 4 poles

Sound power Lw dB (A)										
Model		63 Hz	125 Hz	250 Hz	500 Hz	1000 Hz	2000 Hz	4000 Hz	8000 Hz	Total
KIT TM + HM 35 M4 0,12kW ()	Inlet	39	47	54	57	60	61	62	56	67
KIT TM + HM 35 T4 0,12kW ()	Inlet	39	47	54	57	60	61	62	56	67
KIT TM + HM 40 M4 0,25kW ()	Inlet	43	50	56	59	63	64	65	58	70
KIT TM + HM 40 T4 0,25kW ()	Inlet	43	50	56	59	63	64	65	58	70
KIT TM + HM 45 M4 0,55kW ()	Inlet	47	54	60	63	66	67	68	61	73
KIT TM + HM 45 T4 0,55kW ()	Inlet	47	54	60	63	66	67	68	61	73
KIT TM + HM 56 T4 0,75kW ()	Inlet	52	59	65	71	73	75	75	70	80
KIT TM + HM 63 T4 1,5kW ()	Inlet	53	60	65	72	74	77	77	71	82
KIT TM + HM 71 T4 2,2kW ()	Inlet	57	64	69	75	77	80	80	74	85
KIT TM + HM 80 T4 3kW ()	Inlet	61	68	74	78	81	84	84	77	89
KIT TM + HM 90 T4 4kW ()	Inlet	64	69	77	82	84	86	87	81	92

Sound / 6 poles

Sound power Lw dB (A)										
Model		63 Hz	125 Hz	250 Hz	500 Hz	1000 Hz	2000 Hz	4000 Hz	8000 Hz	Total
KIT TM + HM 63 M6 0,55kW ()	Inlet	43	50	56	63	65	67	68	62	73
KIT TM + HM 63 T6 0,55kW ()	Inlet	43	50	56	63	65	67	68	62	73
KIT TM + HM 71 T6 0,75kW ()	Inlet	49	56	62	67	70	71	71	65	77
KIT TM + HM 80 T6 1,1kW ()	Inlet	52	60	65	68	72	73	72	66	78
KIT TM + HM 90 T6 1,5kW ()	Inlet	56	62	69	76	77	78	79	73	84