



## IN-LINE SILENCERS FOR VACUUM PUMPS

Our in-line silencer filters are fitted in the in-line assembly with a Gas connection to both ends or in the head assembly with a Gas thread coupling pipe at one end and opened on the opposite tip.

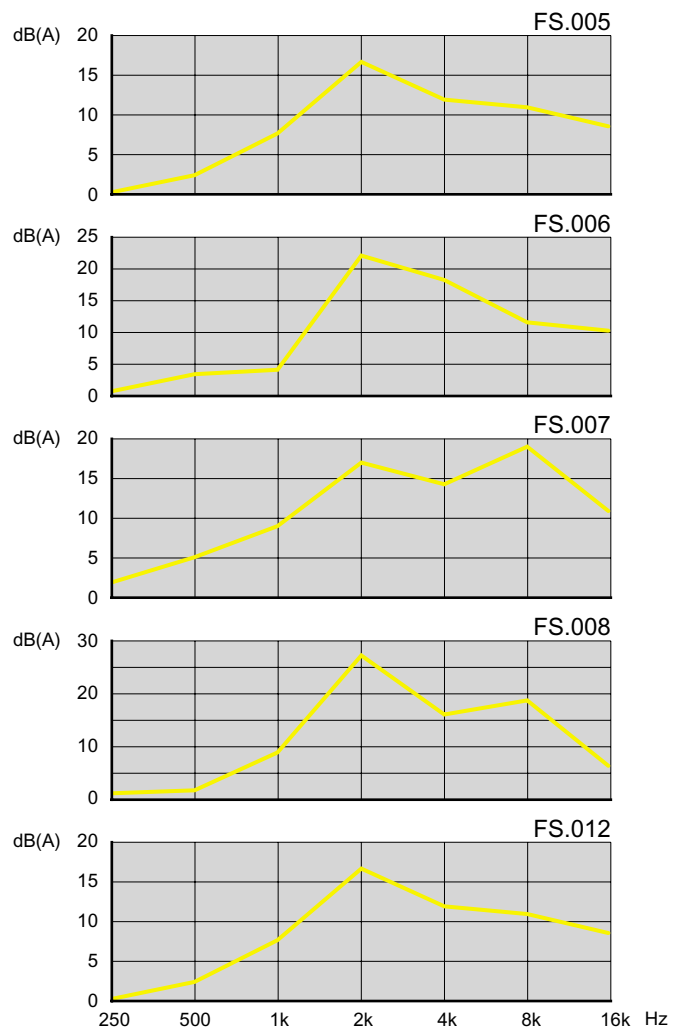
They are used in the main vacuum Pumps and blowers.

The filters are manufactured with sheet steel and soundproofing element in polyurethane in order to absorb the noise of the piped flow.

### TYPE A



### TYPE B



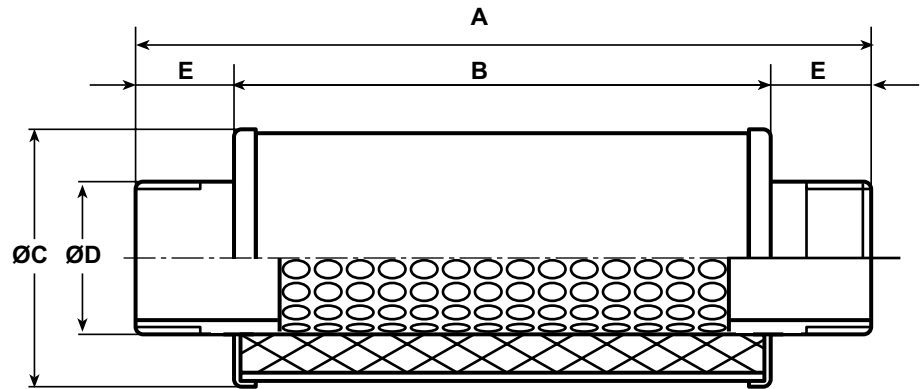
**IN-LINE SILENCERS FOR VACUUM PUMPS**

**IN LINE SILENCERS FILTERS TYPE A**

FILTO REF.	DIMENSIONS					WEIGHT Kg.
	D	A	B	C	E	
FS.001	G.1"1/4	240	140	70	50	0,5
FS.002	G.1"1/2	230	170	80	30	0,6
FS.003	G.2"	260	200	90	30	0,7
FS.004	G.3"	570	400	152	85	2,5
FS.011	G.1"	240	140	70	50	0,5

**Type "A"**

In-line silencer with GAS threaded sleeves at both ends



**IN LINE SILENCERS FILTERS TYPE B**

FILTO REF.	DIMENSIONS					WEIGHT Kg.
	D	A	B	C	E	
FS.005	G.1"1/4	190	140	70	50	0,5
FS.006	G.1"1/2	200	170	80	30	0,6
FS.007	G.2"	230	200	90	30	0,7
FS.008	G.3"	485	400	152	85	2,5
FS.012	G.1"	190	140	70	50	0,5

**Type "B"**

Head mounting silencer with Gas threaded sleeve at one end and opening in atmosphere through protective net at opposite end.

