

HJBM EEC



WALL MOUNTED FAN WITH SQUARE FRAME, VARIABLE PITCH BLADES AND ELECTRONIC MOTOR

MANUFACTURING FEATURES

- Square plate made of galvanized steel sheet.
- Variable pitch angle polyamide impeller reinforced with fibreglass.
- Supplied with motor support and protection guard according to the ROHS 2002/95/EC Directive (Restriction of the Use of Certain Hazardous Substances in Electrical and Electronic Equipments).
- PM brushless motor (permanent magnets), synchronous, electronically commutated, high efficiency and low sound level. Specially designed for fans with electronic operation and control in deported box IP65.
 Working range: from 400 to 1200-2000rpm (depending on the models)
 Motor with IP54 protection and class F insulation. IP 65 drive case
 Power: 220V ± 10% single phase
 Power frequency: 50 / 60Hz
 Operating temperature range: -20°C to 50°C
 Speed control through signal 0-10V or PWM

Accessories



INT



PC2



PCP



REGC



RPO

APPLICATIONS

- Designed for wall assembly, they are suitable for:
- Air renewal for all kind of buildings and industries.

UNDER REQUEST

- B form impeller (air flow from impeller to motor).
- Aluminium impeller.

Technical data

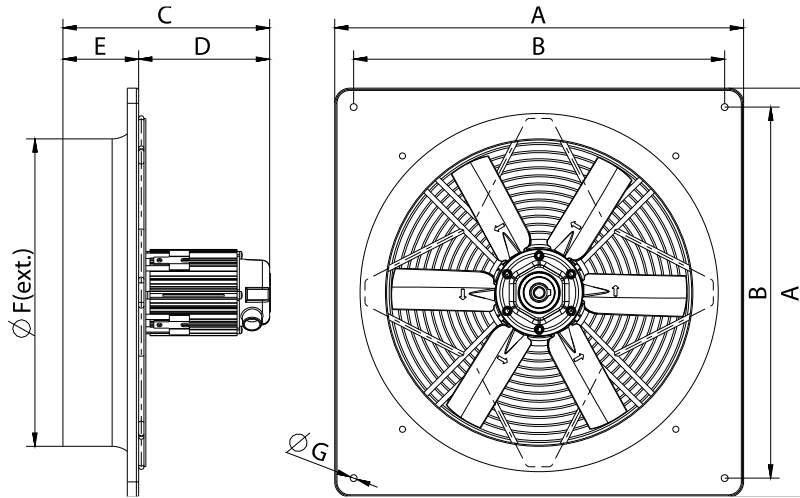
Single-phase motor / 4 poles

Code	Model	R.P.M.	Rated I. (A) 230V	Rated power kW	Max. Airflow m ³ /h	Sound db (A)**	Weight	Connect. diagram
268401103	HJBM 40 0,37kW EEC (1420RPM)	1420	5	0,37	5.040	46	9	1
268451103	HJBM 45 0,75kW EEC (1420RPM)	1420	6	0,75	6.020	48	12,50	1
268501103	HJBM 50 0,75kW EEC (1420RPM)	1420	6	0,75	9.100	50	18	1
268561103	HJBM 56 1,5kW EEC (1420RPM)	1420	10	1,5	11.480	53	22	1

Notes:

** Total sound pressure level at the point of maximum flow measured in dB(A) in the suction measured in free field at a distance of 6m from the source

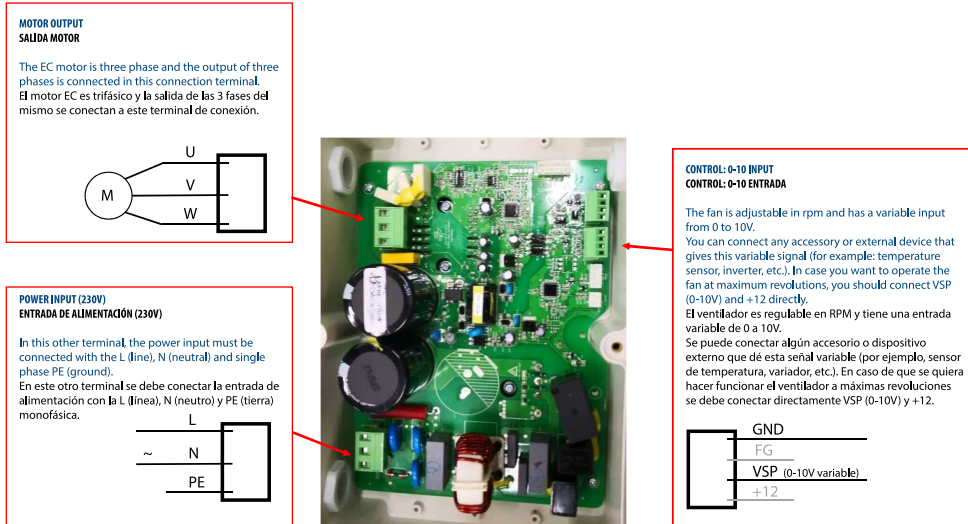
Dimensions



Model	A	B	C	D	E	$\varnothing F$	$\varnothing G$
HJBM 40 0,37kW EEC (1420RPM)	540	490	274	174	100	406	9
HJBM 45 0,75kW EEC (1420RPM)	576	535	273	173	100	455	11
HJBM 50 0,75kW EEC (1420RPM)	655	615	278	158	120	508	11
HJBM 56 1,5kW EEC (1420RPM)	725	650	290	170	120	563	11

Wiring diagram

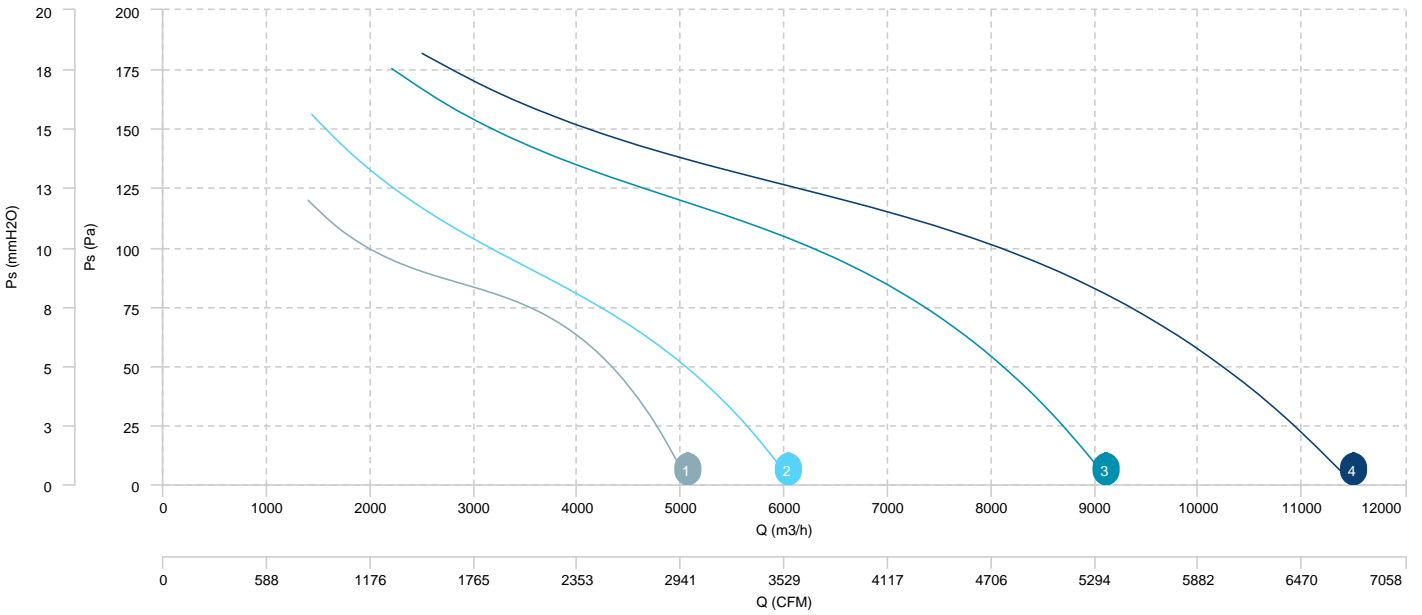
DIAGRAM N° 1



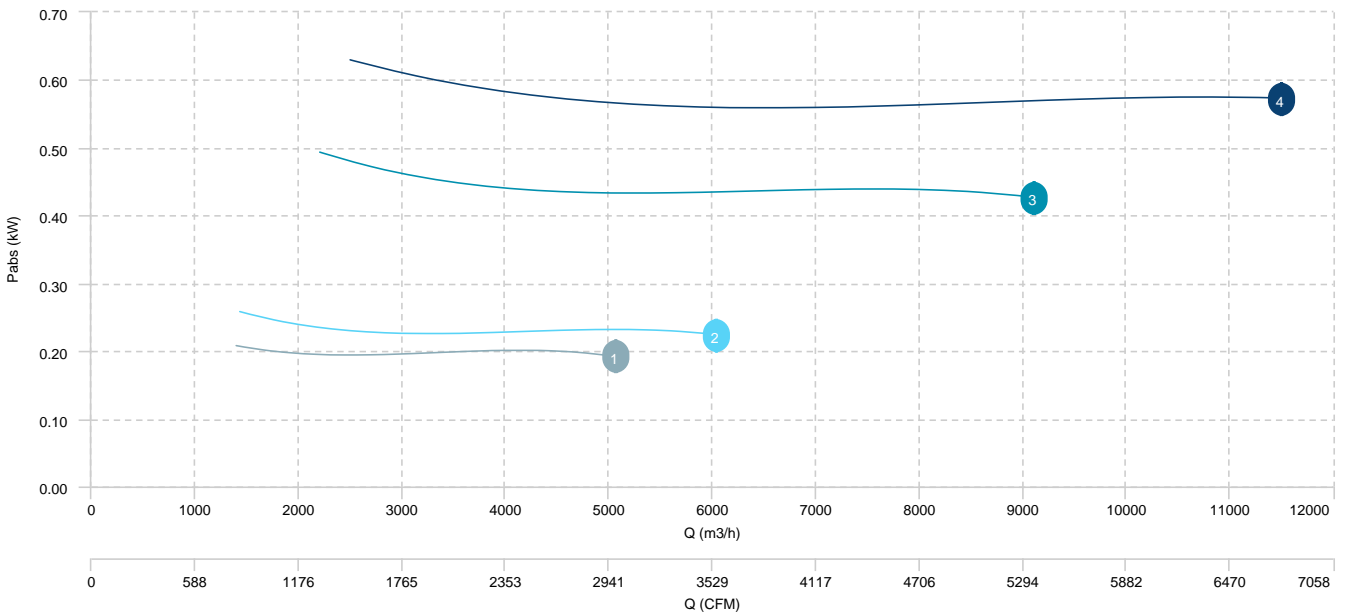
CHARACTERISTIC CURVE

- 1 HJBM 40 0,37kW EEC (1420RPM)
- 2 HJBM 45 0,75kW EEC (1420RPM)
- 3 HJBM 50 0,75kW EEC (1420RPM)
- 4 HJBM 56 1,5kW EEC (1420RPM)

AIR FLOW - PRESSURE



AIR FLOW - ABSORBED POWER



Sound data

Sound / 4 poles

Sound power Lw dB (A)										
Model		63 Hz	125 Hz	250 Hz	500 Hz	1000 Hz	2000 Hz	4000 Hz	8000 Hz	Total
HJBM 40 0,37kW EEC (1420RPM)	Inlet	45	52	57	61	64	66	67	60	72
HJBM 45 0,75kW EEC (1420RPM)	Inlet	49	56	61	65	68	68	69	62	74
HJBM 50 0,75kW EEC (1420RPM)	Inlet	51	58	63	67	70	69	70	64	76
HJBM 56 1,5kW EEC (1420RPM)	Inlet	52	61	66	69	73	72	73	67	79

erp data

ERP	
Fan type	Axial fan
Installation category	A
Efficiency category	Static
The fan has to be installed with FSC	No

ERP / 4 poles

Model	Motor power (kW)	Maximum efficiency point data						
		Max. efficiency (%)	Efficiency grade (N) (N)	Air Flow (m3/h)	Ps (Pa)	Pabs (kW)	speed (rpm)	Specific ratio
HJBM 40 0,37kW EEC (1420RPM)	0,37	38,80	49,58	3.246,54	79,70	0,20	1420	1,00
HJBM 45 0,75kW EEC (1420RPM)	0,75	41,55	51,95	3.648,48	88,46	0,23	1420	1,00
HJBM 50 0,75kW EEC (1420RPM)	0,75	42,03	50,65	5.738,86	108,76	0,43	1420	1,00
HJBM 56 1,5kW EEC (1420RPM)	1,5	41,75	49,67	7.158,42	112,91	0,56	1420	1,00